



Windows & Mobile App

(Windows, iOS, Android)

© 2021 Runwise Limited (UK). All rights reserved.

runwiseFX are trademarks of Runwise Limited (UK)

MetaTrader™ is a trademark of MetaQuotes, Inc.

All other trademarks are the property of their respective owners.

THIS DOCUMENT IS PROVIDED 'AS IS' WITHOUT ANY WARRANTY OF ANY KIND, EITHER EXPRESS OR IMPLIED, INCLUDING BUT NOT LIMITED TO, IMPLIED WARRANTIES OF MERCHANTABILITY, FITNESS FOR A PARTICULAR PURPOSE, OR NON-INFRINGEMENT.

THIS DOCUMENT MAY CONTAIN TYPOGRAPHIC ERRORS AND/OR TECHNICAL INACCURACIES. UPDATES MAY BE MADE TO THIS DOCUMENT AND/OR ASSOCIATED SOFTWARE AT ANY TIME.

TABLE OF CONTENTS

1	INTRODUCTION	1
1.1	Document Conventions	1
2	Installation	2
3	Setting-Up for Mobile Access	3
4	EA Connection to The App	4
5	Main App Tabs	5
6	Main Toolbar	6
7	Tabs In Detail	7
7.1	Accounts.....	7
7.2	EAs.....	8
7.3	Alerts.....	9
7.4	Trades	10
7.5	Chart	11
7.6	News	12
7.7	Mobile	12
7.8	Trading View.....	12
7.9	Signals	13
8	Main Menu of Windows App	16
8.1	File.....	16
8.1.1	Open Data Folder.....	16
8.1.2	Save Desktop.....	16
8.1.3	Exit.....	16
8.2	View.....	16
8.2.1	TradingView Create	16
8.2.2	Currency Map Create.....	16
8.2.3	Currency Strength Create	16
8.3	Config	16
8.3.1	Say Alert Verbally.....	16
8.3.2	Options	16
8.3.3	EA Configuration	17
8.4	Tools	17
8.4.1	Test.....	17
8.4.2	String/Number Combination Wizard	17
9	CONTACTS	18

1 INTRODUCTION

This document covers our companion app for our EAs that allows them to be controlled centrally from Windows on desko and Apple iPhone (iOS) and Android on mobile.

The Windows app also acts a secure and efficient communications gateway to the mobile version of the app, so must be set up first.

1.1 Document Conventions

The following icons are used to throughout the document:



Take note – try to remember



Very import to take note of and remember - could cause undesirable results if ignored



Top tip – shortcut or other useful information that can make the system easier to use



Advanced feature/subject – can skip over when you are first learning how to use the system



Technical ‘behind the scenes’ detail that you don’t strictly need to know but maybe interested in

2 Installation

The Windows app is available from the following link:

<https://www.runwisefx.com/csa/setup.exe>

Follow the usual Window app set-up procedure. Install on same machine as your MetaTrader. So, if have VPS then install Windows app on VPS. See section 4 if have multiple machines running MetaTrader, where it talks about EA input Comms_GUI_Machine.

iOS app on Apple Store: <https://apps.apple.com/bn/app/runwisefx/id1550501513>

Android app on Google Play:

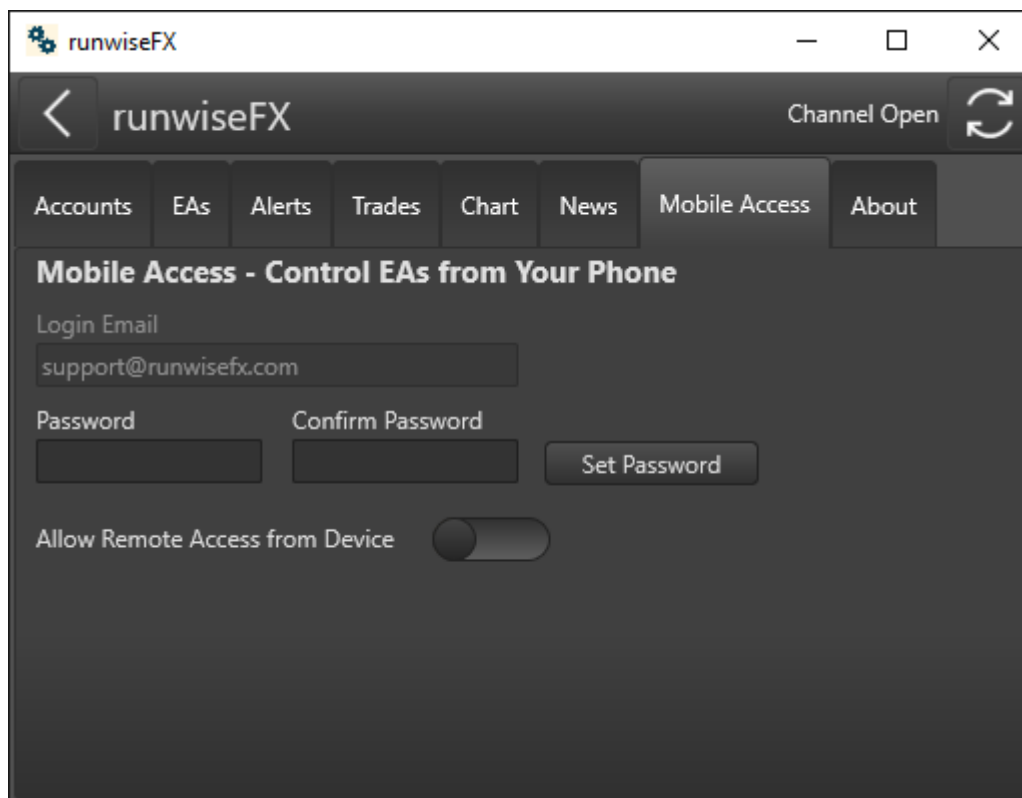
<https://play.google.com/store/apps/details?id=com.embarcadero.runwiseFX>

Note, the Windows app is a direct download from our website and is digitally signed by us – publisher: Runwise Ltd

On the Windows app follow the activation dialog, which is shown at first start-up. Enter your name and email where you activation code will be sent to. Then enter this code in the same dialog, lower part, as directed.

3 Setting-Up for Mobile Access

On the Windows version of the app, go to the Mobile Access tab and enter a password for mobile access. This will be the password you need to enter on the mobile version of the app, along with your email address, as shown. Then re-type the password in the confirm password box and the click Set Password button. This will activate access by the mobile. You can use the 'Allow Remote Access from Device' switch to turn mobile access on/off at any time.



When logging in on mobile make sure the case of the letters for email matches what is in this mobile access tab. Same on password too. We'll make the case on the email less sensitive in the next release.

4 EA Connection to The App

Our EAs will automatically connect to the Windows RunwiseFX app when it is running. The app supports multiple instances of MetaTrader / accounts connecting to it. If any MetaTraders/EAs are located on different machine on your network then you can use EA input **Comms_GUI_Machine** to specify the name of the machine that has the Windows RunwiseFX app running on it.

5 Main App Tabs

Depending on the size and orientation of your device the main menu will be presented either as a row of tabs or as a series of buttons. You can use the 'hamburger' button on the toolbar to go to this tab menu at any time.

The menu items are as follows: -

Accounts: Lists the accounts that have connected to the EA. Can click on account to equity targets.

EAs: Lists the EAs that have connected to the app. Click/touch item to see details for EA.

Alerts: List of alerts that have happened since the Windows app was started. Can click/touch on the alert to see EA details related to the alert, if appropriate.

Trades: List of trades both closed and open. For open trades can click/touch trade to see EA details related to the trade.

Chart: Allows charts to be view from the desktop version of MetaTrader, exactly as they appear, including custom indicators and chart objects.

News: Lists news events

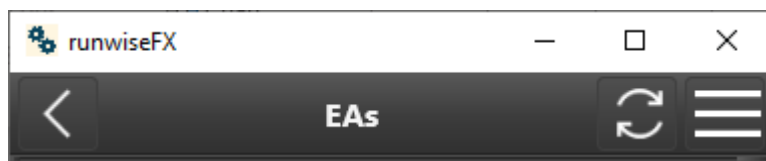
Mobile: Shown on Windows app and allows mobile access to be setup & controlled

TV: Shown on Windows app and allows Trading View charts to be shown and traded via MetaTrader with our trade panel superimposed on top of the TradingView chart.

Signals: Shown on Windows app and allows signals to be configured, e.g. opening trade due to received email from MetaTrader indicator or alert from TradingView

About: Shows version and connection status, plus log messages.

6 Main Toolbar



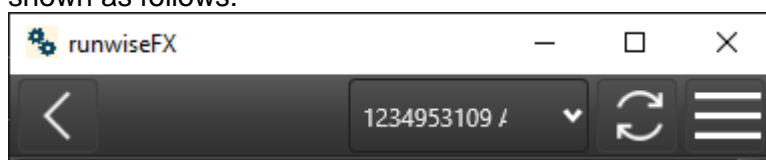
The main tool bar shows a back button, refresh and for smaller devices a 'hamburger' menu access button. Note, for Android users, the back button isn't shown, instead you should use the system back button at the bottom of your device screen.

The back button allows you go back to the previous screen. It's also useful when entering a new value, e.g. take profit price, and have changed your mind about altering the value as you start to type. In this case, the back button will cancel your edit.

The refresh button will refresh the current contents of the screen, although generally shouldn't be necessary as the screen will auto update. It's of most use when viewing charts as that refresh is manual.

The 'hamburger' menu button allows you to toggle between the main menu and the screen last on. Note, this button isn't displayed if your device is large enough to display the tab menu.

If more than one account is connected then an account selection drop-down will be shown as follows:

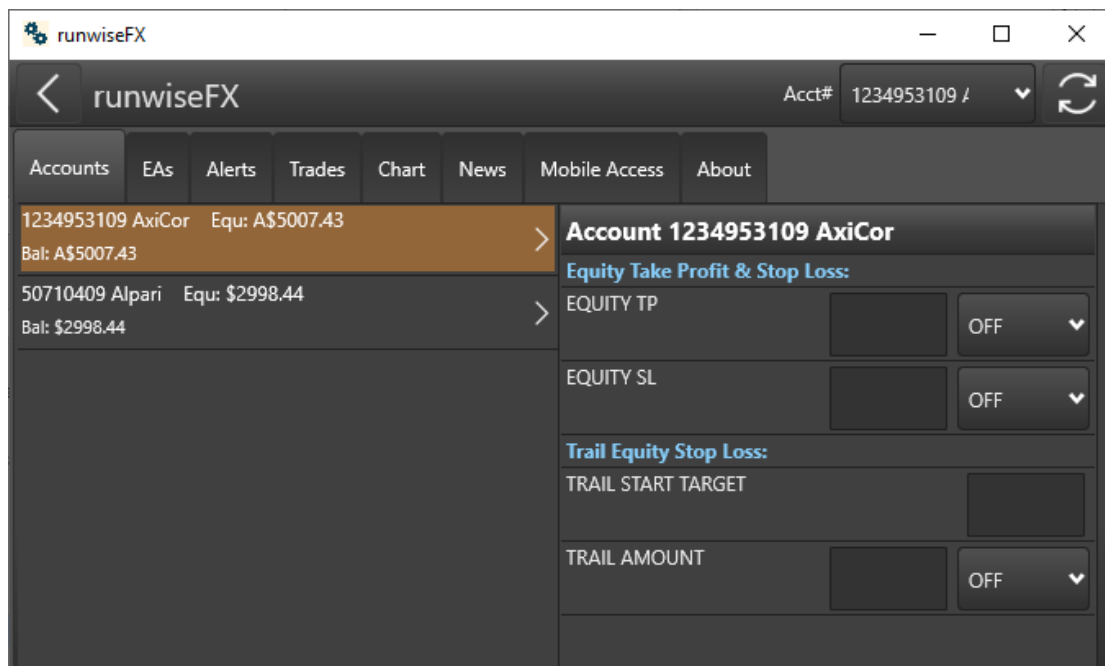


This allows you to select the account to show/use when accessing the EAs, trades and charts menu options.

Finally, if your device is large enough then the connection status of the mobile link will be shown. The connection status is more likely to be shown if there is a problem, e.g. you are using the app on your mobile but the desktop Windows app isn't running or it's lost connection to the Internet. In this case you will see 'No Desktop' in orange.

7 Tabs In Detail

7.1 Accounts



Lists the accounts of the EAs that are currently connected, showing current equity and balance. Click on item do edit account targets:

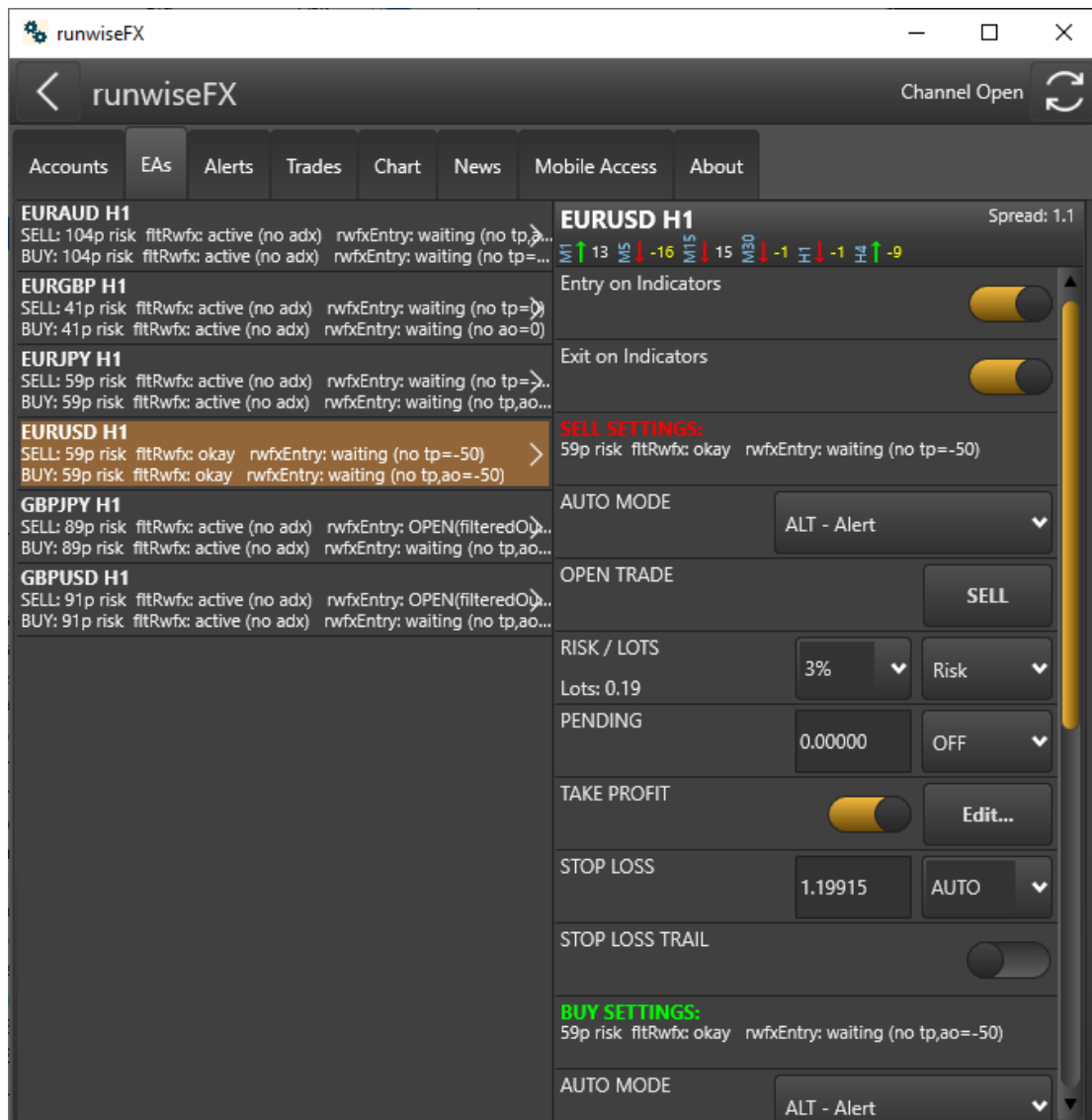
Equity TP: This is the amount at which if equity reaches will cause the specified action from the drop-down. This action can include suspending trading, closing all trades, or both.

Equity SL: Similar to Equity TP but will take action if equity goes down to this amount

Trail Start Target: It target equity amount when trailing will start when reached.

Trail Amount: Amount to trail by and action to take if hit. The selected action will happen when equity reduces by supplied trail amount from its peak.

7.2 EAs



Allows EA status to view and EA to be modified when selected.

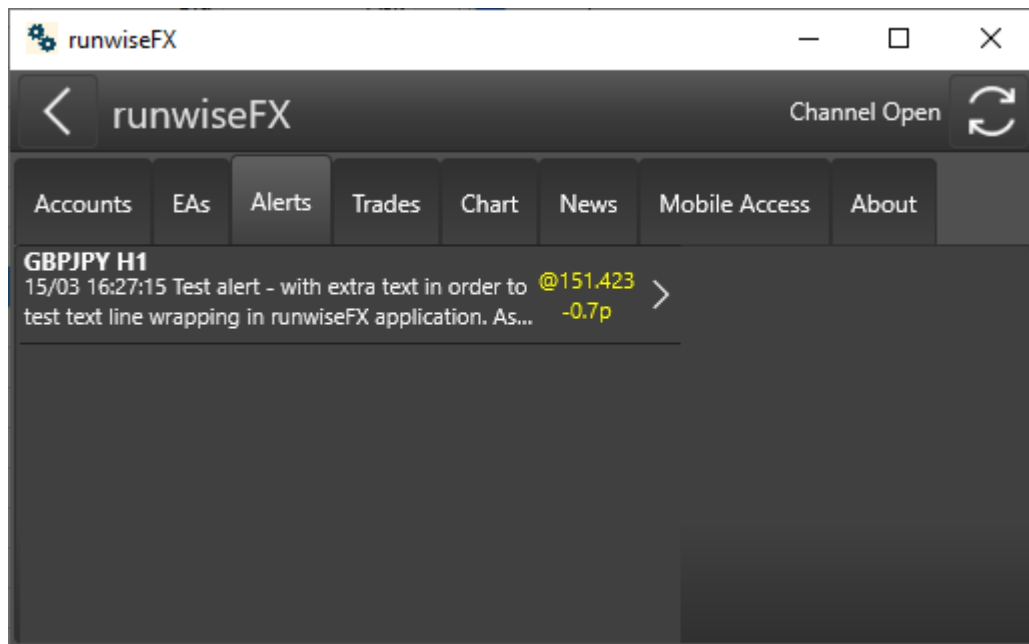
The items that can be edited are similar to what is found on the EA panel. Note, the rule GUI controls are shown first. If you download any rules from our library that have such controls then these will be shown too. The settings for sell and buy are then show.

Auto Mode is really useful for turning tradin on/off.

Take Profit can be adjust by usign the Edit... button, which has a master take profit on/off next to it. The Edit button will show the take profit targets, where you adjust the target either in pips, risk reward ratio (rrr) or specific price. You can also set what happens when that target is reached.

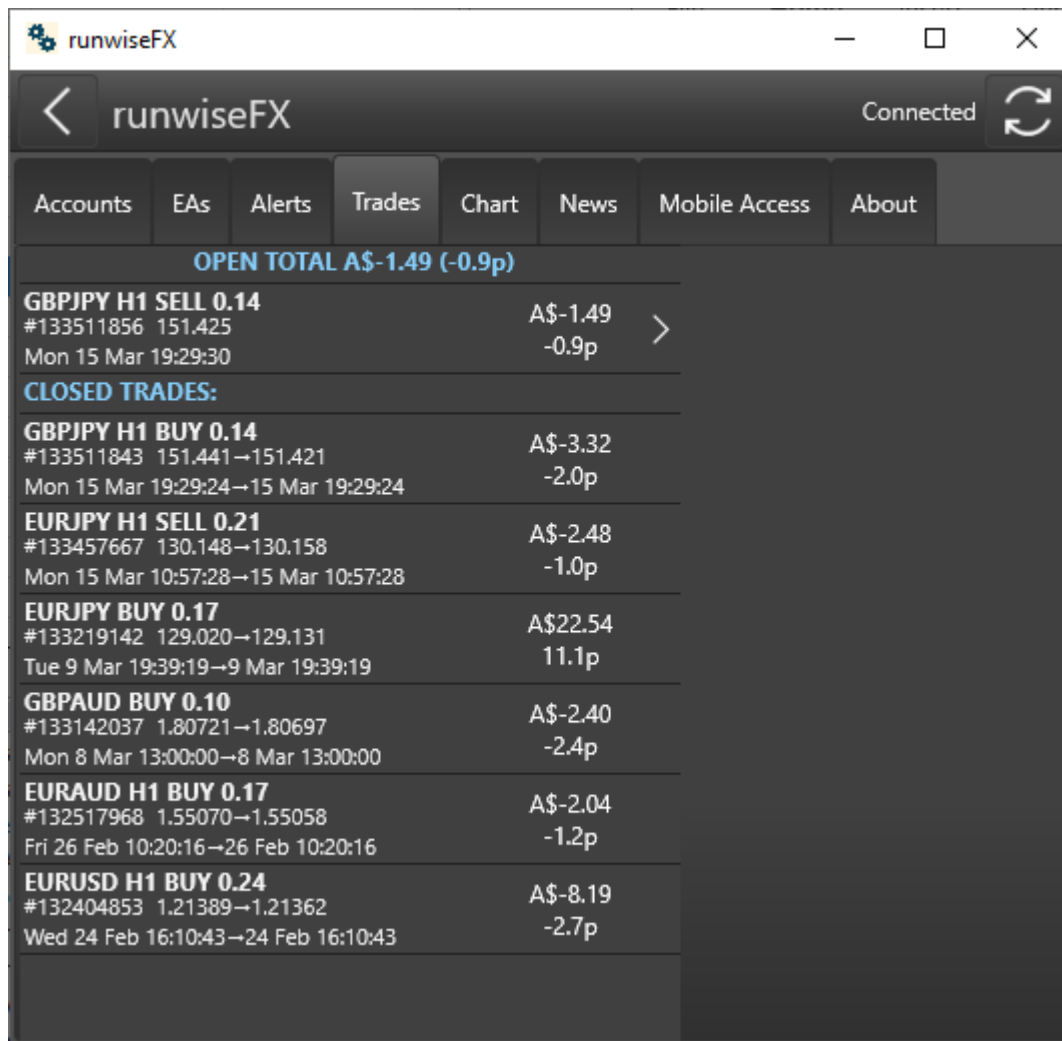
Use the back button to go back.

7.3 Alerts



Lists the alerts that have happened since the Windows app was started. The price that the alert happened is also shown, plus pips moved since the alert. If the alert relates to a particular EA then can click the alert to go straight to the setting for the EA and the associated direction (buy/sell) that the alert related to.

7.4 Trades



The screenshot shows the 'runwiseFX' trading interface. At the top, there is a navigation bar with a back arrow, the 'runwiseFX' logo, and a 'Connected' status with a refresh icon. Below this is a menu with tabs for 'Accounts', 'EAs', 'Alerts', 'Trades' (which is selected), 'Chart', 'News', 'Mobile Access', and 'About'. The main content area displays a list of trades. At the top of the list, it shows 'OPEN TOTAL A\$-1.49 (-0.9p)'. The first trade is 'GBPJPY H1 SELL 0.14' with details: '#133511856 151.425', 'Mon 15 Mar 19:29:30', 'A\$-1.49', and '-0.9p'. A right-pointing arrow is next to this trade. Below this is a section for 'CLOSED TRADES:' followed by several entries: 'GBPJPY H1 BUY 0.14', 'EURJPY H1 SELL 0.21', 'EURJPY BUY 0.17', 'GBPAUD BUY 0.10', 'EURAUD H1 BUY 0.17', and 'EURUSD H1 BUY 0.24'. Each entry includes trade ID, price range, date, and profit/loss in A\$ and pips.

Trade Type	Trade ID	Price Range	Date	Profit/Loss (A\$)	Profit/Loss (pips)
OPEN TOTAL A\$-1.49 (-0.9p)					
GBPJPY H1 SELL 0.14	#133511856	151.425	Mon 15 Mar 19:29:30	A\$-1.49	-0.9p
CLOSED TRADES:					
GBPJPY H1 BUY 0.14	#133511843	151.441→151.421	Mon 15 Mar 19:29:24→15 Mar 19:29:24	A\$-3.32	-2.0p
EURJPY H1 SELL 0.21	#133457667	130.148→130.158	Mon 15 Mar 10:57:28→15 Mar 10:57:28	A\$-2.48	-1.0p
EURJPY BUY 0.17	#133219142	129.020→129.131	Tue 9 Mar 19:39:19→9 Mar 19:39:19	A\$22.54	11.1p
GBPAUD BUY 0.10	#133142037	1.80721→1.80697	Mon 8 Mar 13:00:00→8 Mar 13:00:00	A\$-2.40	-2.4p
EURAUD H1 BUY 0.17	#132517968	1.55070→1.55058	Fri 26 Feb 10:20:16→26 Feb 10:20:16	A\$-2.04	-1.2p
EURUSD H1 BUY 0.24	#132404853	1.21389→1.21362	Wed 24 Feb 16:10:43→24 Feb 16:10:43	A\$-8.19	-2.7p

List the trades both open and closed. Show the profit both in amount and pips. For open trades can click trade to see EA controls that relate to the trade.

The open total both in amount and pips is also shown at the top.

7.5 Chart



Shows chart from MetaTrader desktop as setup on your desktop version of MetaTrader, complete with any custom indicators, etc. A drop-down selection list is provided so you can select which EA you would like to see a chart for. Left/Right and Zoom In/Out button are also provided. On mobile you can pinch & zoom the chart. On Windows the zoom can be controls via mouse wheel.

Note, use the Refresh button on the main tool bar to refresh the chart.



There is currently an issue with our iOS version where icons aren't displayed on the buttons on the chart toolbar. The buttons still work, so just cosmetic. Will fix in next release.

7.6 News

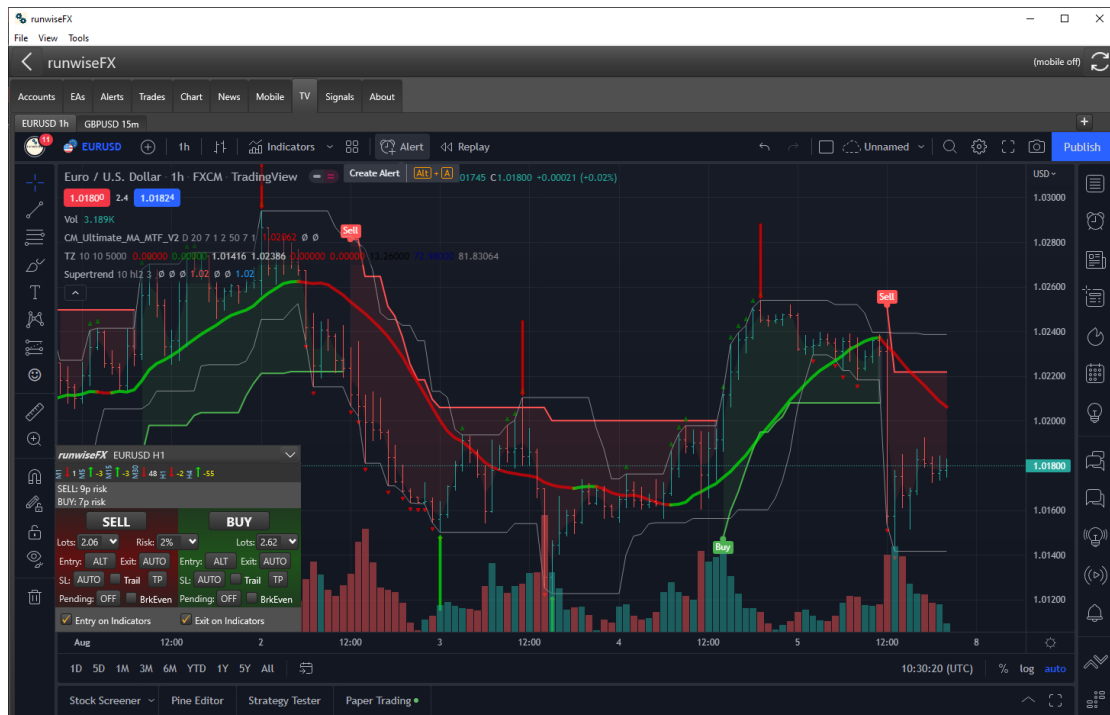
Lists news events if EA on chart is configured to show them.

7.7 Mobile

Only shown on Window app and allows control from your mobile to be setup. See section 3.

7.8 Trading View

Only visible on Windows app and is currently in Beta. No support is offered.

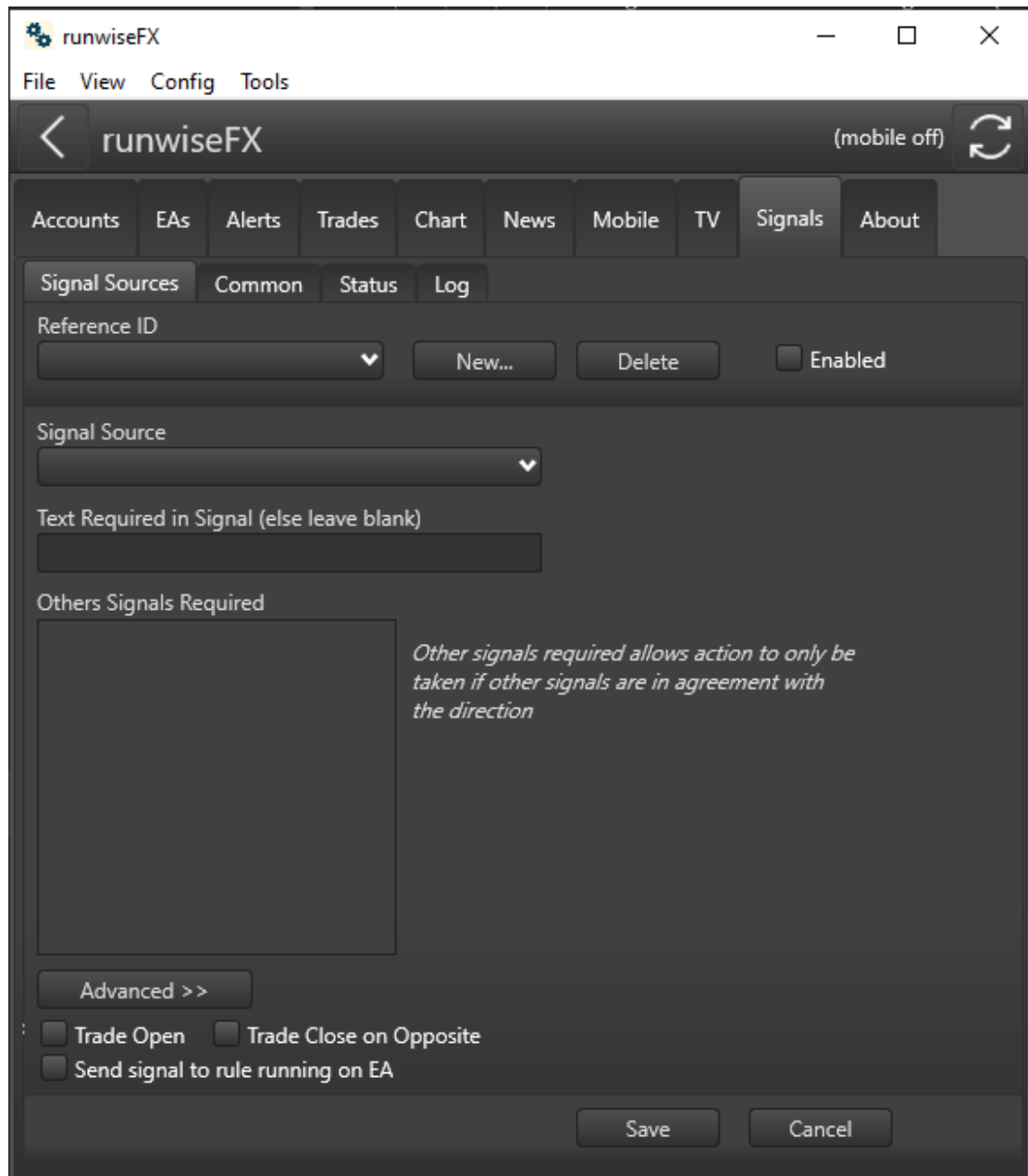


Shows TradingView chart with our trade panel superemposed on top. Will send trades to appropriate EA on MetaTrader and allow you to trade TradingView via MetaTrader. MetaTrader provides partial closes and auto stop loss, etc., that isn't available in Trading View, plus huge broker choice.

Use the + button on the chart taps to open extra tabs. You can also open a totally new TradingView window via View | TradingView Create menu option. This is very useful if you have a multi monitor setup. Tip: Use File | Save Desktop to save your desktop layout for next time.

7.9 Signals

Only shown on Windows app and allows signals to be configured that the app should look out for. For example, email alerts from MetaTrader indicators or pop-up alerts from TradingView.



Use Signal Sources to configure signal to watch for. For example, to create new signal to look out for emails from MetaTrader indicators do the following:

- Click New... button and enter reference ID, can be anything
- Use Signal Source drop-down to select MEA – MetaTrade Email Alert

- If there is any text in the email alert you wish to check for then can add to 'Text Required in Signal' box. This is useful if want to setup more than one signal that have differences in the alet text.
- Other Signals Required can be used to specify other configured signals that must of already signalled in the same direction to allow action to be taken when this signal happens.
- Select what to do on 'Action on Signal', e.g. should trade opened and if should close trade in opposite direction, if open. Or you can also tick 'Send signal to rule running on EA, i.e. to do more complex/bespoke handing.. Note, if 'send signal to rule...' is ticked then we don't recommend having 'trade open' ticked as well, as the idea is the rule from our library will handle any trade open/pending order, rather than the Windows app doing it itself.
- See section 7.9.1 concerning the 'Advanced >>' button that provides additional controls to set SL, TP and/or pending order entry price from alert text.
- Finally click Save
- Note, you will need to have configured MetaTrader to send emails locally to a program running on your computer. See Appendix A on this.
- TIP: You can test the email alert on the EA via CONFIG | Tools | 'Test Email Signal' button. This will send an email just like an indicaor would and uses the text in box to the left of this button. You'll see the raw emails appear in the About tab which has a log for the main system.
- IMPORTANT: The email alerts from the indicator must include some sort of indication on the direction, e.g. buy/sell, long/short, etc. and also the symbol name. If these aren't in there (either subject or body of email) then you'll need to get in touch with the indicator delveloper to add them. However, if specified 'send signal to rule...' then the rule can look out for this instead.

The Log tab in the Signal tab can used to see what signals have been received and what action was taken.

7.9.1 Advanced Button

The 'Advanced >>' button allows additional items to be set.

Others Signals Required

Other signals required allows action to only be taken if other signals are in agreement with the direction

Supply text in alert that marks out additional items

SL Entry @ (pending)

TP1 TP2 TP3 TP4

Advanced >>

This allows you to parse stop loss, entry price and/or take profits from the alert/signal text. Simply enter the text that appears before the item in alert text. For example, if the alert text contains 'SL: 1.5678' then set the SL box to SL: (no need to worry about the space – just intelligently parses the number after the text you supply). '

Note, if 'Entry @' box is blank then will open market order, else pending order. Will automatically set limit/stop type depending where entry price is in relation to current price. If pending order already setup then will update to new value.

Note, for TPs, still need to have configured that number of TPs in CONFIG | Take Profit on the EA. Will just set price to what is alert text if TP n boxes are populated. Can set to 'action on hit' on the EA to say what to do when TP target is reached.

8 Main Menu of Windows App

The Windows version of our app has an additional main menu shown at the top off the application window. This section will explain what the menu options do.

8.1 File

8.1.1 Open Data Folder

This opens the data folder where file get store that are used by the Window application. For example Config | Options storage.

8.1.2 Save Desktop

Will save the current layout of the windows of the application, including pop-out charts including Trading View charts.

8.1.3 Exit

Will exit the Windows application.

8.2 View

8.2.1 TradingView Create

Will create a new pop-up window for additional TradingView charts. This can allow you to make use of a multi-monitor setup.

8.2.2 Currency Map Create

Will create a new pop-up for viewing the output from our map element of our Currency Map & Strength indicator: <https://runwisefx.com/cms/> This indicator must be running on a MetaTrader chart running on the same machine for this to work.

8.2.3 Currency Strength Create

Will create a new pop-up for viewing the output from our strength component of Currency Map & Strength indicator: <https://runwisefx.com/cms/> This indicator must be running on a MetaTrader chart running on the same machine for this to work.

8.3 Config

8.3.1 Say Alert Verbally

This is a tick menu option, which can toggle of any alerts, show in the Alerts tab, should be readout.

8.3.2 Options

Allow various options to be changed that relate to our Windows application.

The mostly likely option may need to set is Symbol Translate. This allows you handle where symbol used on TradingView doesn't match MetaTrader. Here you can set TVsymbol=MTsymbol. For example, if DowJones on TradingView but US30 on MetaTrader then set to **DowJones=US30**

Can comma separate if more than one pair.

8.3.3 EA Configuration

Allows the EA configuration to be edited for any connected EA and selected account. This is what can also be edited via the CONFIG button on the EA. The advantage using our Windows application for this is that it is not limited to the 64 character of edit boxes shown on MetaTrader charts. You can also get more visibility of when entries have been set on per symbol, period and/or trade index basis.

8.4 Tools

8.4.1 Test

It shouldn't be necessary for you to use this option unless requested by RunwiseFX support.

8.4.2 String/Number Combination Wizard

Only necessary to use this when alerted by the EA when it asks you to visit <https://runwisefx.com/fix/> so that the EA can handle a string/number combination of indicator inputs that it is not seen before.

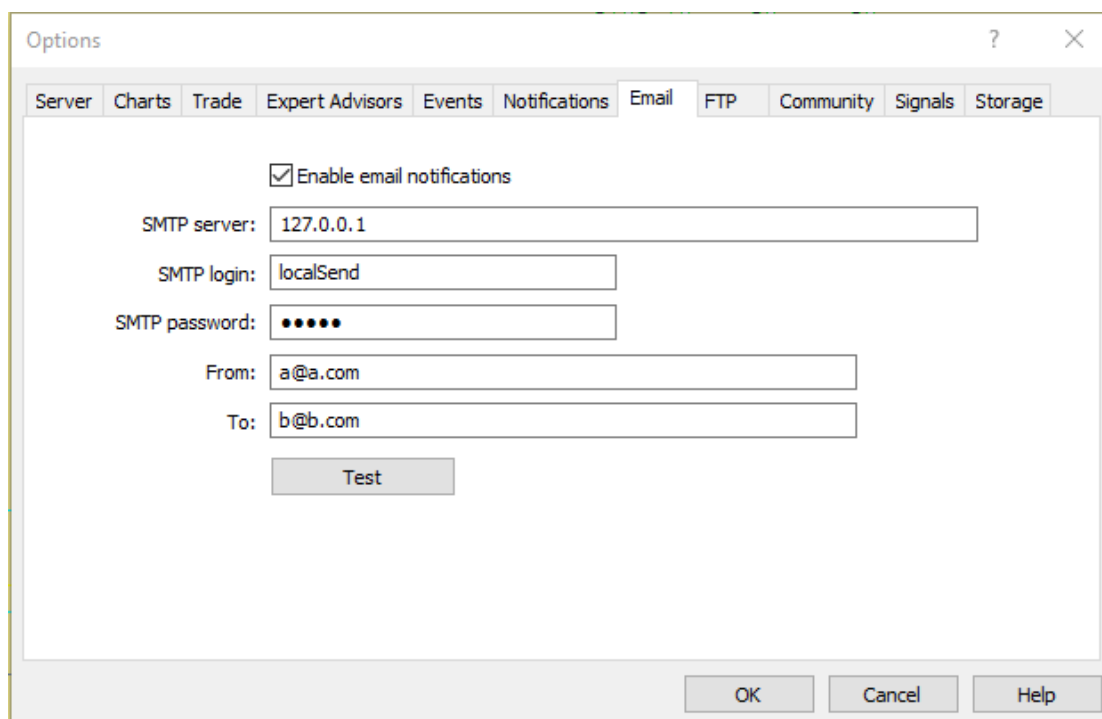
9 CONTACTS

Runwise Limited
The Guild Hub
High Street
Bath
BA1 5EB
United Kingdom

Email: support@runwisefx.com
Web: www.runwisefx.com

APPENDIX A – Configuring MetaTrader to Send Email Alerts to RunwiseFX App

If you wish to use our RunwiseFX App signals functionality to respond and trade to alerts coming from indicators, sent via email, then you'll need to configure MetaTrader to send those emails locally to the RunwiseFX App. To do this, in MetaTrader, go to Tools | Options | Email tab and set up as follows, where password can be set to anything, e.g. local



The screenshot shows the 'Options' dialog box in MetaTrader, with the 'Email' tab selected. The 'Enable email notifications' checkbox is checked. The SMTP server is set to 127.0.0.1, SMTP login is localSend, SMTP password is masked with dots, From is a@a.com, and To is b@b.com. A 'Test' button is visible below the fields. At the bottom of the dialog are 'OK', 'Cancel', and 'Help' buttons.

The contents of the boxes don't matter too much as long as not showing in red as that can prevent MetaTrader from sending the emails. The exception is the SMTP Server box, which needs to be set to **127.0.0.1** which means send locally to your computer.

★★★★★
**top
tip**

You can test you've set it up correctly via CONFIG | Tools on the EA and use the 'Send Email' button. Should see it appear in the log of the Signals tab. If doesn't work then try restarting our Windows app.

END OF DOCUMENT